



INSTALLATION GUIDE



PACIFICA



SANDCASTLE



BALLARD BROWN



GALVESTON GRAY



Tando Composites provides these instructions as general guidelines only. The contractor and/or installer shall be responsible for ensuring that all applicable local building codes are followed, which may require modification of these general guidelines. Tando Composites assumes no liability for personal injury or property damage resulting from improper or careless application of the described techniques.

For more information on Beach House Shake[®] products, visit TANDOCOMPOSITES.COM.



Beach House Shake RUSTIC COLLECTION INSTALLATION GUIDE

GENERAL INFORMATION

1-Tando Composites products are intended for use in a vertical placement only and are not designed or warranted for roofing or flooring applications. However mansard roofs with a 45/12 slope or greater are acceptable applications.

2-Tando Composites products are designed as an exterior cladding, not as a weather resistant barrier. Beach House Shake is designed to allow the material underneath it to breathe; therefore, it is not a watertight covering. To achieve designed performance, Beach House Shake must be installed over a weather resistant house barrier system, such as house wrap.

3-As with the majority of exterior building materials, Tando Composites products will expand and contract with a change in temperature. Therefore, during installation it is necessary to position the Beach House Shake properly to compensate for temperature effects.

4-It is essential to work over a smooth, flat, nailable wall surface, (i.e. minimum 7/16"(1.11cm) OSB board or plywood is recommended). If Tando Composites products are being installed over furring strips, furring strips must be installed on a 45° angle, spaced 8"(20.32cm) center to center, while ensuring that the side seams are supported by furring strips.*

5-Fixtures cannot be installed directly onto Beach House Shake; always use a wooden support or specifically designed mounting blocks to attach fixtures. Follow the mounting block manufacturer's installation instructions and ensure proper clearance to Beach House Shake (recommended minimum of 1/4"(0.64cm)) to allow room for expansion and contraction.

6-Non-corrosive fasteners are required to secure the panels and they must penetrate through the solid surface by at least 1 1/4"(3.18cm) and into a solid substrate by at least 7/16"(1.11cm).*

7-Always begin the installation at the lowest point of the structure, work from left to right installing one row at a time, and completing one wall before beginning another.

8-Store product on edge (vertical), do not stack flat.

9-Keep the R-E-L number, located on the box of your products (ex: REL-123456) for future reference.

10-To cut the material, it is recommended to use a circular saw with a thin kerf finishing blade.

11-Some finish trims such as J-channel and Outside Corner Post, must be installed on wall prior to installation of Beach House Shake. Follow the finish trim manufacturer's instructions for proper installation.

12-Fastening Beach House Shake Rustic Collection should not restrict movement. Fasteners should be driven straight into the center of any nailing slot with the head of the fastener making light contact with the product, allowing the panel to be hung. The center nail hole must always be securely fastened to ensure that the panel expands and contracts from the center out.

13-If a partial piece is used at either end, a new center hole should be created, by drilling a 1/8"(0.32cm) hole in the top flange, near the center of the panel at the same height as the other installation holes.

14-If face nailing is needed, pre-drill a hole in an inconspicuous area, such as a shingle seam. The hole must be larger than the shank of the nail or screw, but smaller than the head, to allow for possible thermal movement. The head can be covered with matching paint or caulk.

15-It is best to work with the product at waist-level, allowing the installer to inspect the back of the product, verifying that all fingers are properly engaged. Do not force product up into the upper fingers of the lower row, as this may damage the stop posts and/or will override the expansion joints and cause buckling.

16-Fitting product between windows and around openings requires a spacing of 1/4"(0.64cm) to allow for expansion.

17-Variations in shade and color are an inherent characteristic of Beach House Shake.

Beach House Shake RUSTIC COLLECTION INSTALLATION GUIDE

BASIC GUIDELINES

1-Always fasten through the center of the nailing slots. Each complete panel must be installed using a minimum of 8 fasteners - 7 fasteners across the nailing flange (at max of 8" (20,32cm) spacing) and 1 fastener in the lateral hole (Figure 1). Install fasteners in the following order: central hole, 1 at either end, and 2 fasteners spaced on each side between the central and end holes. If Beach House Shake Rustic Collection is installed on a wall with furrings, furring strips should be installed on a 45° angle, at 8" (20,32cm) center to center and a furring strip is required behind each fastener.

2-Never hammer or screw the fasteners in completely; leave a gap of 1/16" (0,16cm) between the nailing channel and the fastener's head (Figure 2). Always use non-corrosive nails or screws with a head of 0.4" (1cm) in diameter and a body of 0.150" (0,38cm) in diameter and penetrate through the solid surface by at least 1 1/4" (3,18cm) and into a solid substrate by at least 7/16" (1,11cm).

3-Make sure that all pieces are properly joined together (push firmly upwards on the panel making sure that the insertion is complete) (Figure 3).

4-When using a finish trim (J-channel, Outside Corner Post, etc.), leave a space of 1/4" (0,64cm) between the trim and Beach House Shake Rustic Collection (Figure 4). The required opening for finish trim is 3/4" (1,91cm).

5-Beach House Shake Rustic Collection corners must be installed on wall corners prior to installing the Beach House Shake Rustic Collection panels. See the corner installation section as needed.

Figure 1

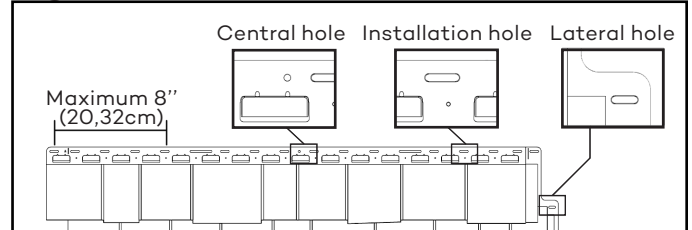


Figure 2

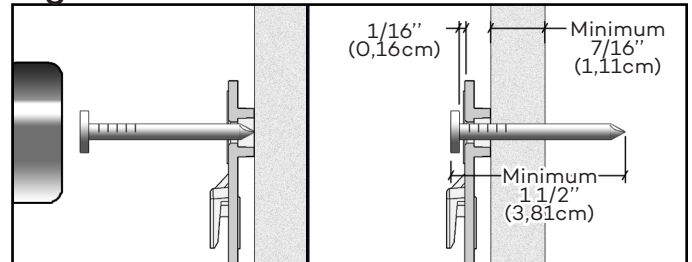


Figure 3

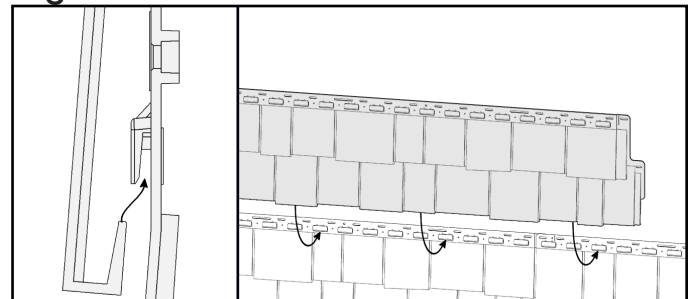
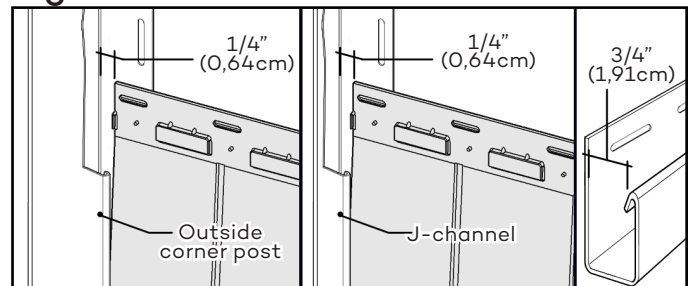


Figure 4



Some elements of the image above were partly removed to facilitate understanding.

Beach House Shake RUSTIC COLLECTION INSTALLATION GUIDE

INSTALLATION STEPS

1-First, install the Universal Starter strips at the lowest point of the structure. Make sure that the horizontal starting line is perfectly level and square with the wall. Leave a 4" (10,16cm) gap at each end of the wall for Beach House Shake Rustic Collection corners (1). If a floor is against the wall, install the top of the starter strips at 3" (7,62cm) above it in order to leave a gap of 1 1/8" (2,86cm) between starter strips and the floor (2). If there is no floor, starter strips should be flush with the base of the wall. Fasten the starter strips at maximum intervals of 8" (20,32cm) or less. Install the next starter strip by pressing it against the previous one (3) and fasten it as mentioned above (Figure A). Be sure to align starter strips on adjacent walls.

2-Determine the number of panels needed for the wall by dividing the total length of the wall, less the width of the corner pieces used, by 55 5/8" (141,29cm). Cut the left side of the first panel in a straight line in order to avoid having a very small piece at the right end of the wall. Any installed panel should be at least 12" (30,48cm) long. Insert the first panel into the starter strip and slide it leaving a 1/16" (0,16cm) space between its edge and the decorative corner installed previously (see the decorative corner installation section) or slide the panel into the trim leaving a space of 1/4" (0,64cm) between the inside wall of the trim and the panel (Figure B).

3-On each panel, fasten the center hole of the product, this will ensure even movement in both directions during expansion/contraction. Also place a fastener into the last hole on both ends, plus 2 others evenly spaced on each side of the center hole of the nailing channel and another into the lateral hole (Figure C). Fasteners should never be spaced more than 8" (20,32cm). Each full length panel should be secured with a minimum of 8 fasteners. Remember that fasteners must be placed in the center of the nailing slots. Always use non-corrosive fasteners penetrating into a solid substrate of no less than 7/16" (1,11cm) thick. When attaching the fasteners, be sure they only lightly touch the product allowing it to move with varying temperatures and they are installed flush with the panels, so as not to interfere with the succeeding row.

- If the product is installed on a furring wall, a furring strip is required behind each fastener.
- If a panel piece does not have the initial center hole, drill a new center hole of 1/8" (0,32cm) diameter at the same height as the other nailing slots.

4-Install each subsequent panel by hooking it into the starter strip and sliding it to the left overlapping the previous one. Make sure to space panels equally according to the outdoor temperature during the installation. If product is installed in outdoor temperature from 30°F to 100°F (-1°C to 38°C) position the next panel so that its upper left edge stops on the temperature line. For installations below 30°F (-1°C), position the panel slightly right of the line (1/16" (0,16cm)) (Figure D). Once the panel has been properly spaced, fasten it as previously indicated. Repeat this step until the end of the row.

Figure A

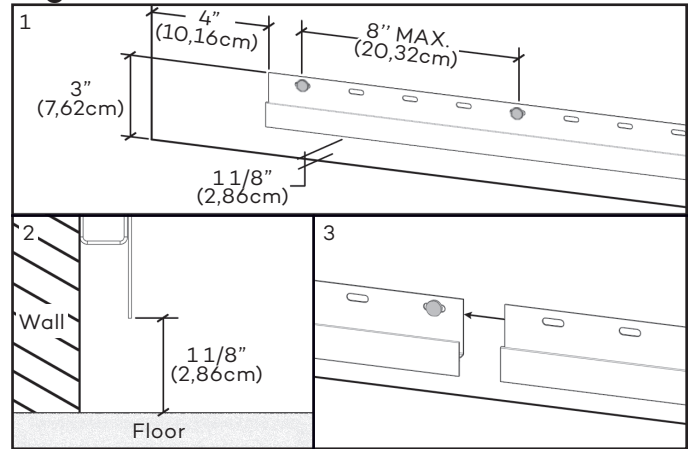


Figure B

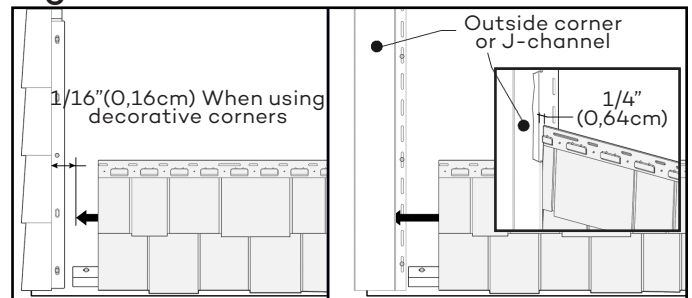


Figure C

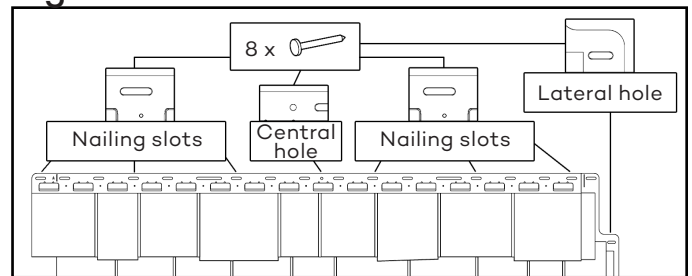
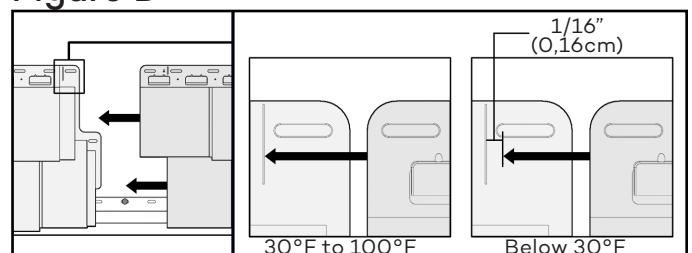


Figure D



Beach House Shake RUSTIC COLLECTION INSTALLATION GUIDE

INSTALLATION STEPS (CONTINUATION)

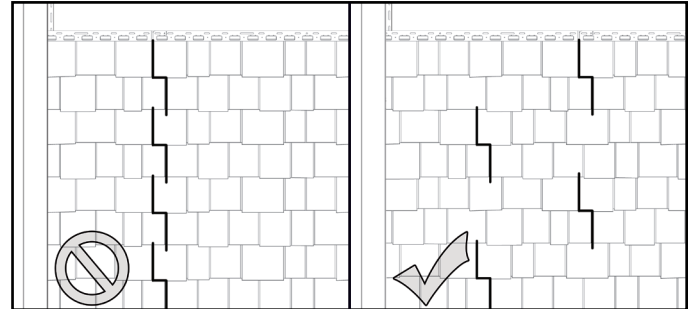
5-Begin the second row by cutting the first panel with approximately 16”(40,64cm) increment from the cutting line of the first row. Hooking the lower hooks with the top hooks of the last installed row. Never force the panel up into the fingers of the lower row as this may damage the stop posts and cause buckling on panels. To eliminate stacking seams, alternate the cut positions of the first panel for the following rows (Figure E).

6-For the last row or places where you may need to attach panels other than in installation holes, use a knife to create a new 1”(2,54cm) slot (Figure F); the slot must be wider than the fastener but not as wide as the fastener head. Although not set in installation holes, this type of cutting will allow the expansion/contraction movement of panels.

-Note: For proper installation & optimal appearance, shim as required to adjust the angle of the last row.

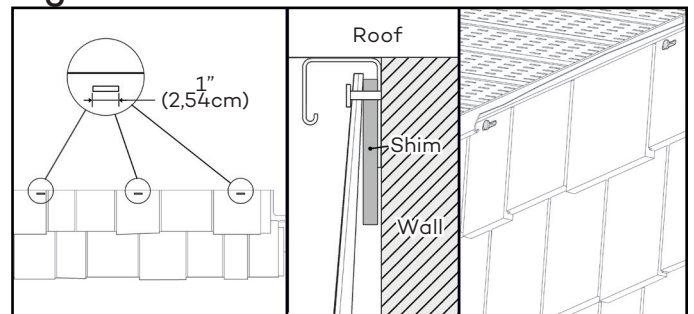
Reminder: Do not set accessories directly on the product. The fasteners must be fixed into a solid surface. If you need to set accessories over Beach House Shake Rustic, at a concealed spot on the product, create a new 1”(2,54cm) slot larger than the fastener body but smaller than the fastener head to permit expansion/contraction of panels.

Figure E



Result to be avoided.

Figure F



SPECIAL SITUATIONS AND SUGGESTIONS

| SITUATION: | ITEMS TO CHECK: |
|--|--|
| - Panels won't lock together side to side. | The wall may not be level and flat. Check previous panels to ensure that all hooks and installation fingers are properly seated. (See General Information) Use shims as needed to ensure a level wall surface. |
| - The bottom locking fingers won't lock into the previous row. | |
| - Panels are buckling on the wall. | Make sure the fasteners are not restricting product movement. Check for proper spacing at interlocks. Make sure fasteners are fully engaged. |
| - Panels are not lying flat against the wall. | |

Beach House Shake RUSTIC COLLECTION INSTALLATION GUIDE

DECORATIVE CORNERS INSTALLATION

Caution: Beach House Shake Rustic corners must be installed on wall corners prior to installing the Beach House Shake Rustic panels. It is recommended that no more than two corner pieces are installed at one time so that slight adjustments on corner height can be made to match the height of panel rows if necessary.

1-Fasten the first corner so that the bottom of the corner is 3/4"(1,91cm) above the lowest point of the wall corner. Install fastener into the center hole on each side of the corner. Then install fasteners into the uppermost holes and the bottom holes on each side (Figure G).

2-Install another corner by overlapping the previous one up to the reference line (Figure H). Fasten it as previously indicated.

3-Install multiple rows of product until one row overlaps the upper corner. Some adjustments may need to be made at the vertical overlap of the two corners (as they are installed) in order to maintain the proper corner/product alignment. There is approximately a 1/2"(1,27cm) vertical adjustment value. To do so, only remove the fasteners at the center holes of the upper corner. Adjust its position and put the fasteners back into the center holes of the corner.

4-For the last corner only, cut excess from part. If center holes are lost during cutting, make new center holes (wider than the shaft of the fastener, but smaller than the head) on each side and fasten it on wall (Figure I).

Figure G

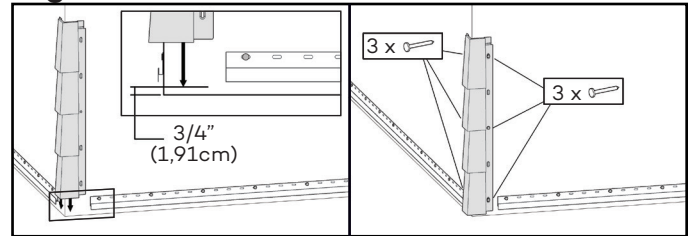


Figure H

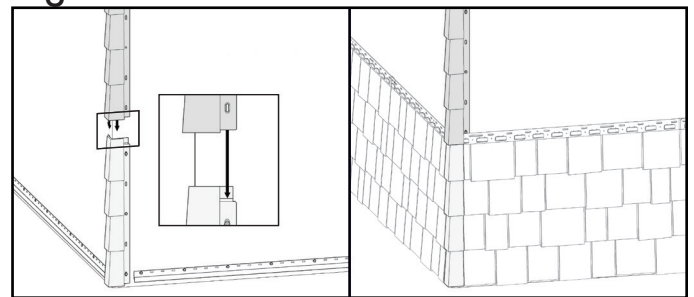
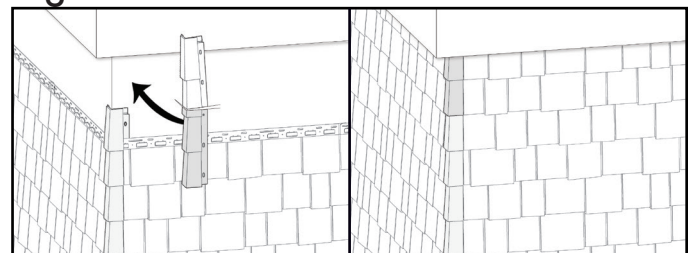


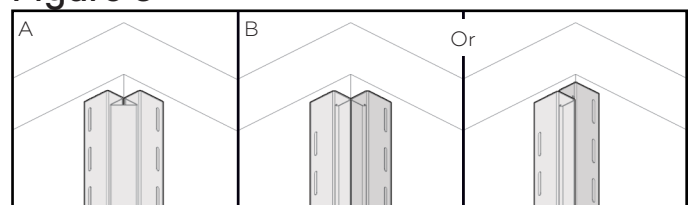
Figure I



INSTALLATION TIP

1-Many solutions are possible to finish an inside corner: Inside Corner Post (A) or two J-channels (B) (Figure J). It is important to seal the inside corner of the wall prior to installation of the trim.

Figure J



For details, see the respective installation guide of each product.